

PART OF S.E. 1/4 OF SEC. 20, T.7N., R.1W., S.L.B.&M.  
**W. S. BUTLER SUBDIVISION NO. 2**  
**LOTS 13 TO 16 & 24 TO 27**

70

IN NORTH OGDEN CITY

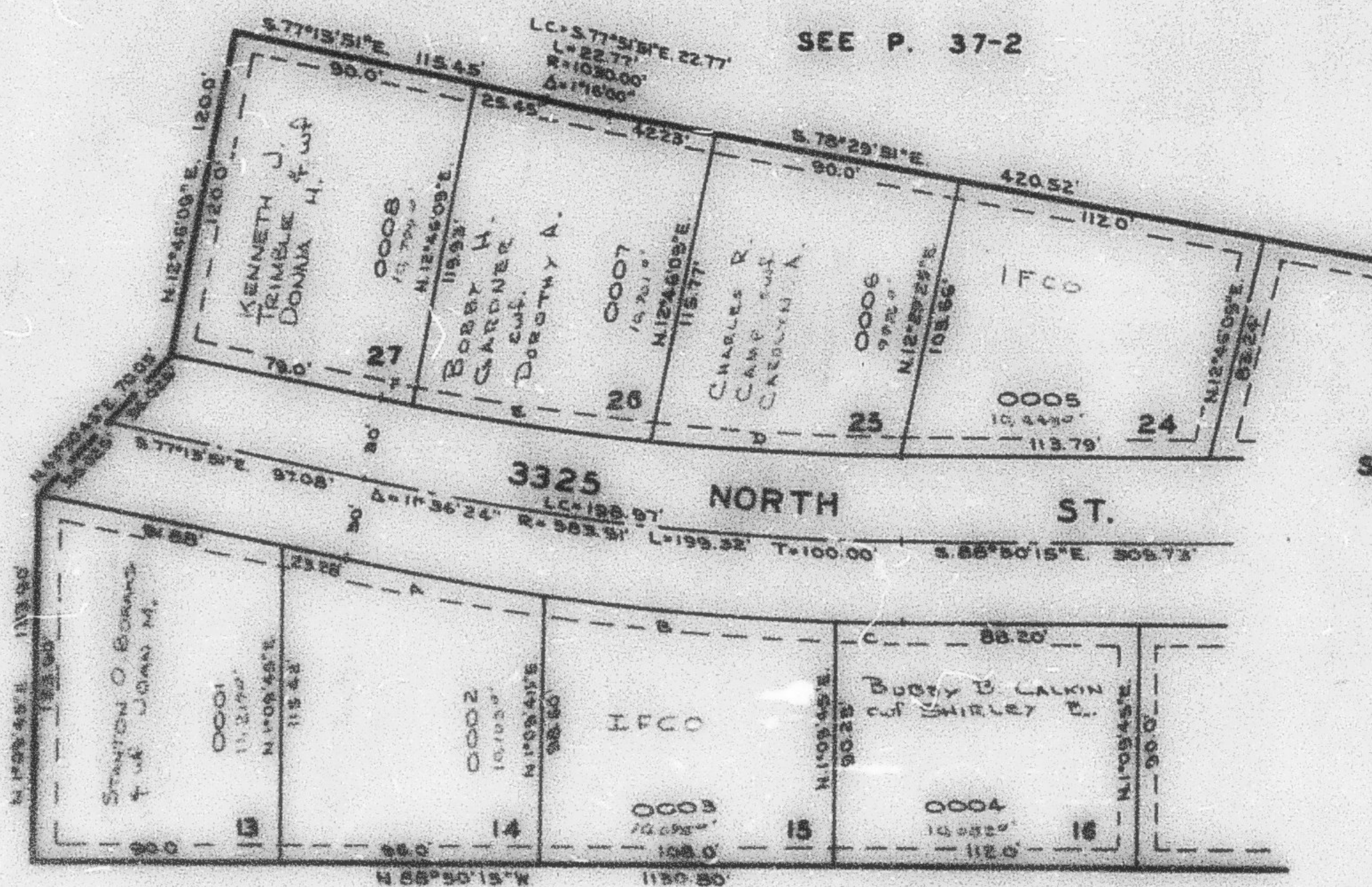
TAXING UNIT: 10

SCALE 1" = 50'

PREFIX: 16-070

EXCEPT WHERE OTHERWISE SHOWN  
 ALL LOTS OWNED BY:  
 WAYNE S BUTLER  
 c/w PHYLLIS J.

SEE P. 68



SEE P. 37-2

SEE P. 71

SEE BOOK 17, P. 42

SEE BOOK 17, P. 41

	A	B	C	D	E	F
Δ	4°08'16"	8°07'21"	1°20'42"	5°30'05"	5°28'57"	0°55'38"
R	103.91'	103.91'	133.91'	553.91'	553.91'	553.91'
L	75.25'	108.57'	23.80'	91.61'	90.53'	11.0'
LC	73.21'	108.32'	55.60'	91.57'	90.60'	11.0'

NOTE: UTILITY & DRAINAGE EASEMENTS  
 EACH SIDE OF PROPERTY LINES AS  
 INDICATED BY DASHED LINES.  
 SEE ORIGINAL PLAT IN BOOK 15,  
 P. 79.